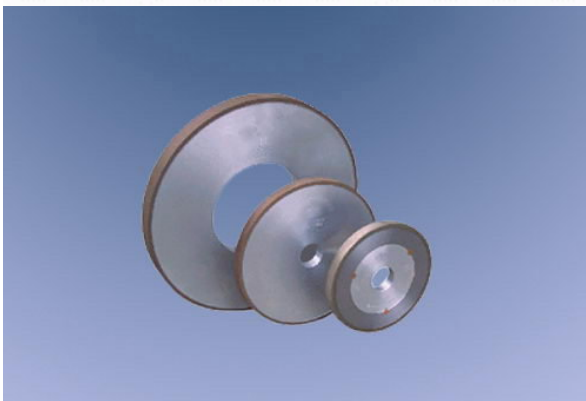
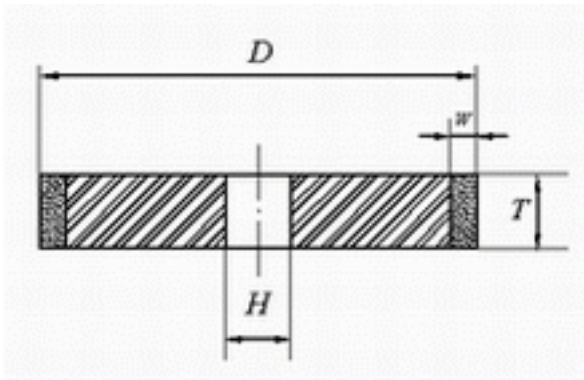


## Plain Grinding-wheels

Written by YingLong

Friday, 06 October 2006 13:27 - Last Updated Friday, 17 September 2010 17:10

---



Plain wheels

Code 1L1

Binder: B.M(S.Q)

Size (mm)

Diamond/CBN Content (carat/piece)

D

T

Plain Grinding-wheels

Written by YingLong  
Friday, 06 October 2006 13:27 - Last Updated Friday, 17 September 2010 17:10

---

H

W

50

75

100

75

3

20

3

4.48

6.72

## Plain Grinding-wheels

Written by YingLong

Friday, 06 October 2006 13:27 - Last Updated Friday, 17 September 2010 17:10

---

8.96

75

4

20

3

5.97

8.96

11.94

75

5

20

## Plain Grinding-wheels

Written by YingLong

Friday, 06 October 2006 13:27 - Last Updated Friday, 17 September 2010 17:10

---

3

7.46

11.20

14.93

100

3

20

3

6.03

9.05

12.07

## Plain Grinding-wheels

Written by YingLong

Friday, 06 October 2006 13:27 - Last Updated Friday, 17 September 2010 17:10

---

100

4

20

3

8.05

12.07

16.09

100

5

20

3

10.06

## Plain Grinding-wheels

Written by YingLong

Friday, 06 October 2006 13:27 - Last Updated Friday, 17 September 2010 17:10

---

15.08

20.11

125

3

32

4

10.04

15.05

20.07

125

4

## Plain Grinding-wheels

Written by YingLong

Friday, 06 October 2006 13:27 - Last Updated Friday, 17 September 2010 17:10

---

32

4

13.38

20.07

26.76

125

5

32

4

16.73

25.09

## Plain Grinding-wheels

Written by YingLong

Friday, 06 October 2006 13:27 - Last Updated Friday, 17 September 2010 17:10

---

33.45

125

6

32

4

20.07

30.11

40.14

150

3

32



## Plain Grinding-wheels

Written by YingLong

Friday, 06 October 2006 13:27 - Last Updated Friday, 17 September 2010 17:10

---

4

12.11

18.16

24.22

150

4

32

4

16.15

24.22

32.29

## Plain Grinding-wheels

Written by YingLong

Friday, 06 October 2006 13:27 - Last Updated Friday, 17 September 2010 17:10

---

150

5

32

4

20.18

30.27

40.36

150

6

32

4

24.22

## Plain Grinding-wheels

Written by YingLong

Friday, 06 October 2006 13:27 - Last Updated Friday, 17 September 2010 17:10

---

36.33

48.44